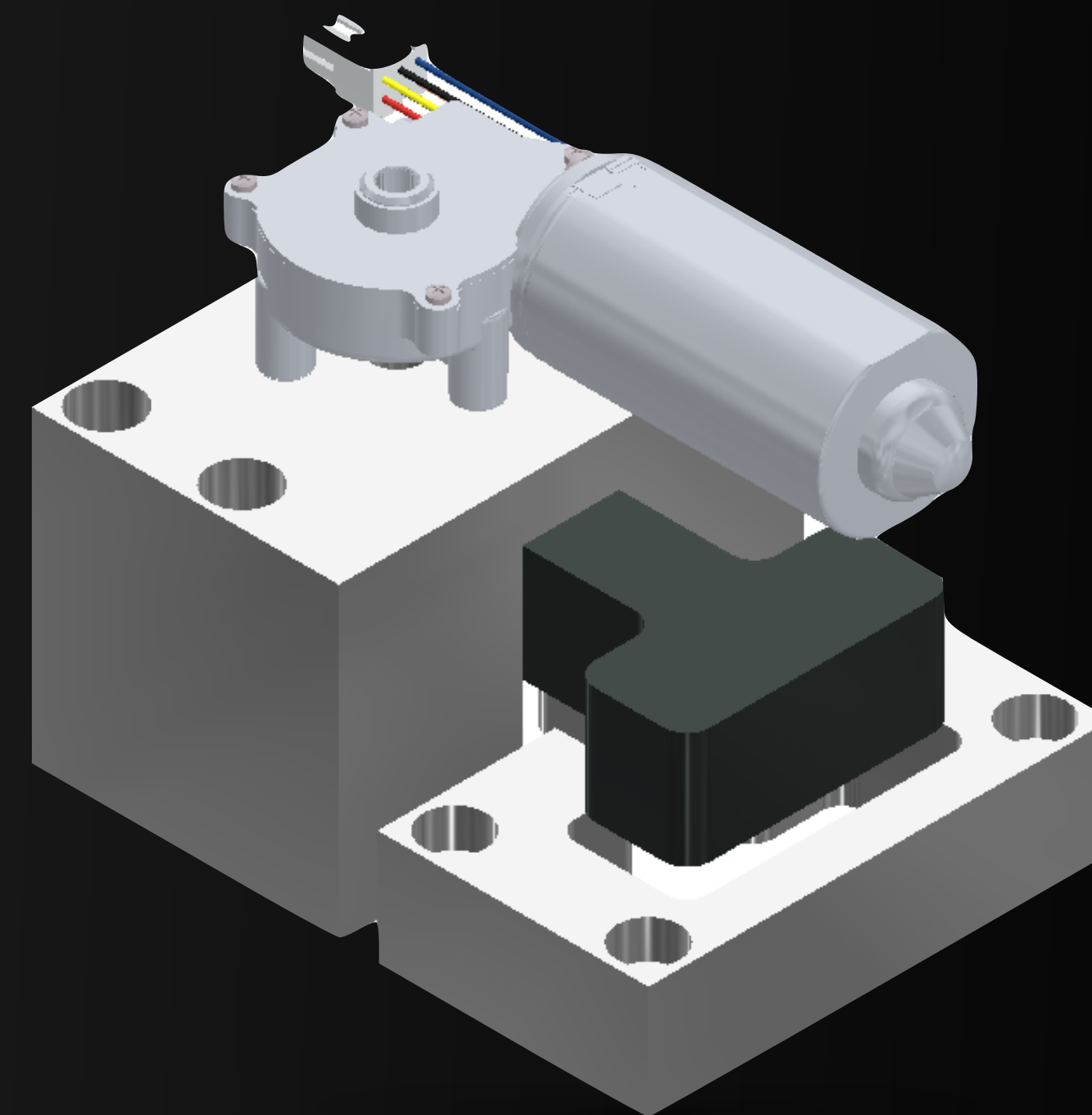


BéM

Electric blocking system for mold



LIFTMOULD

Your security is our priority

PRESENTATION

The « **BéM** » electric mold blocking system allows a mold to be locked and unlocked safely without human intervention in the injection press.

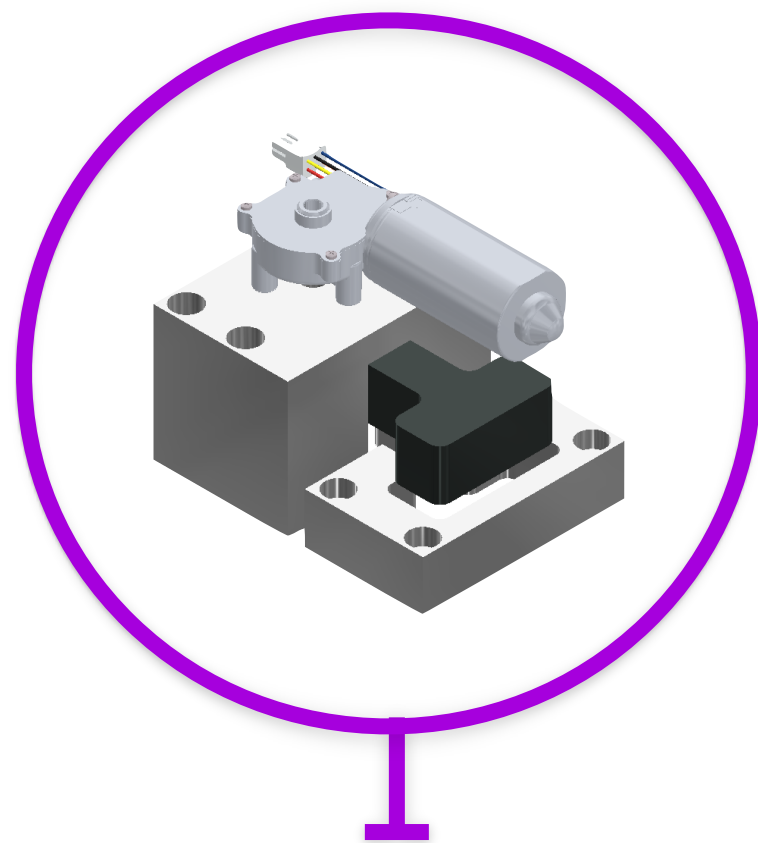
It works simply, just connect the electronic plug to the press when the mold is in place to put it into function (unlock the mold).

The plug also makes it possible to recharge the battery when the mold is in operation in the press.

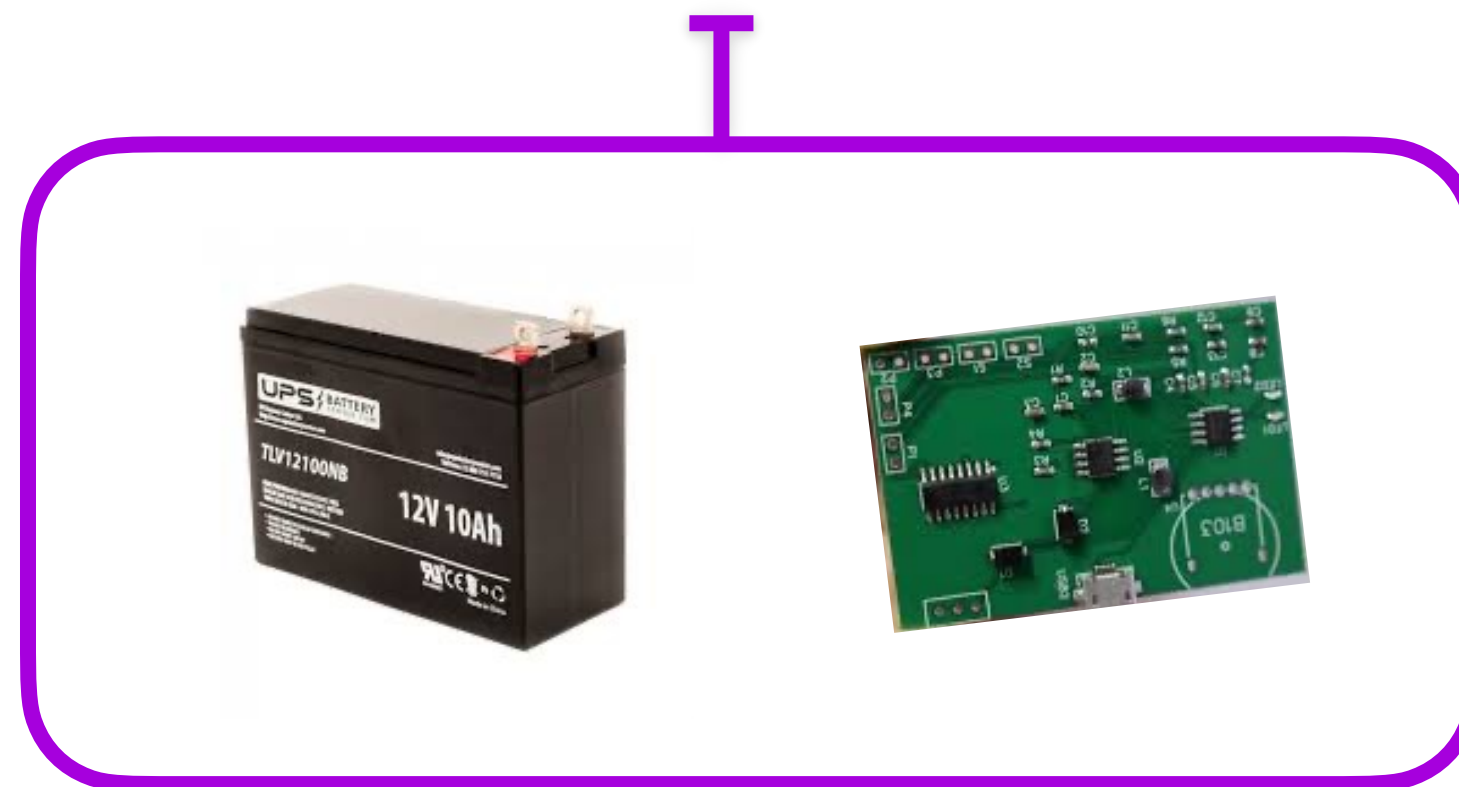
The « **BéM** » electric blocking system for molds complements the **MLS 50T** Liftmould lifting system to optimize safety and SMED time.

DESCRIPTION

Box including:
1 Battery with integrated charger
+ 1 electronic card



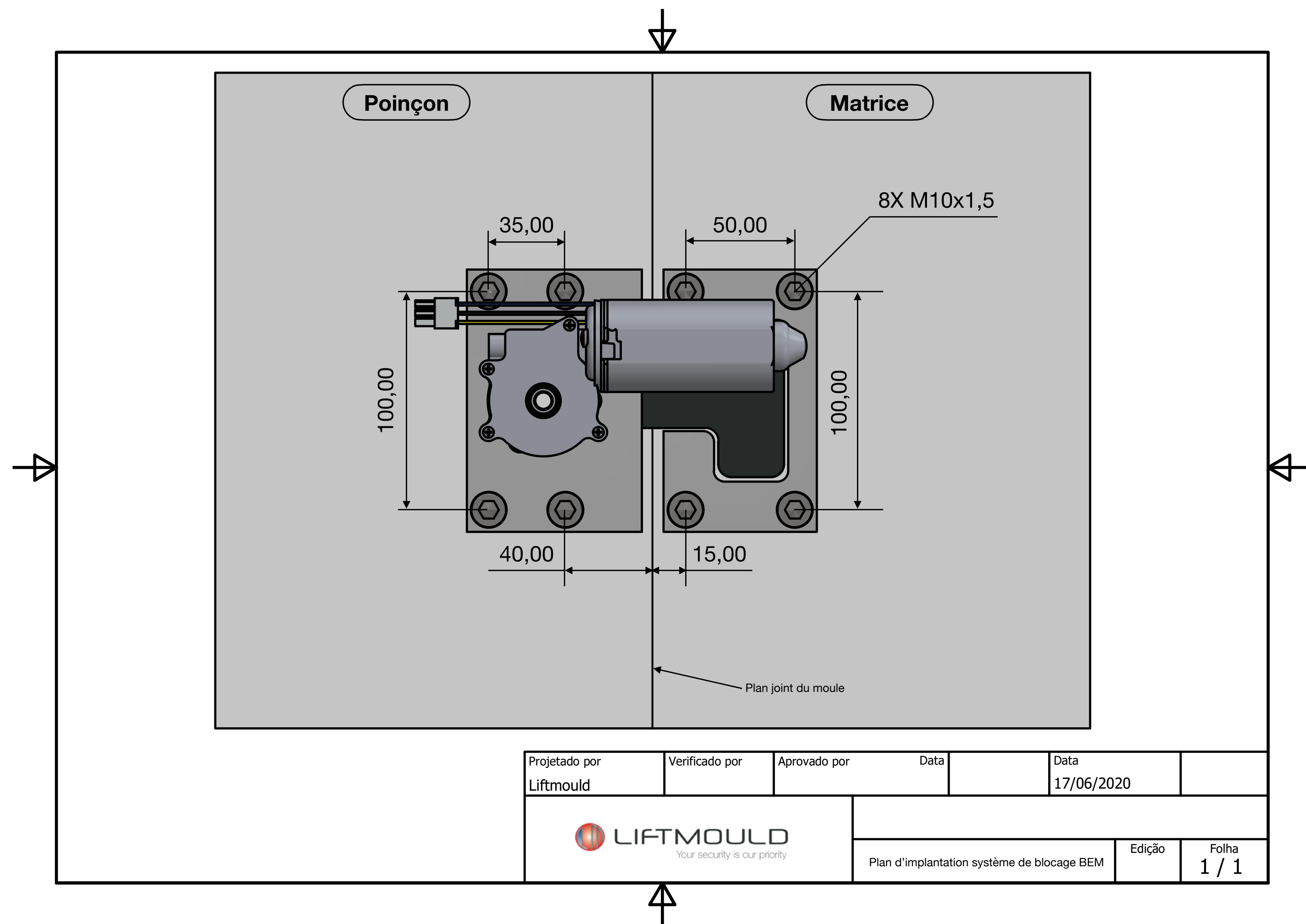
Blocking system
electric



1 electronic plug (female on mold)

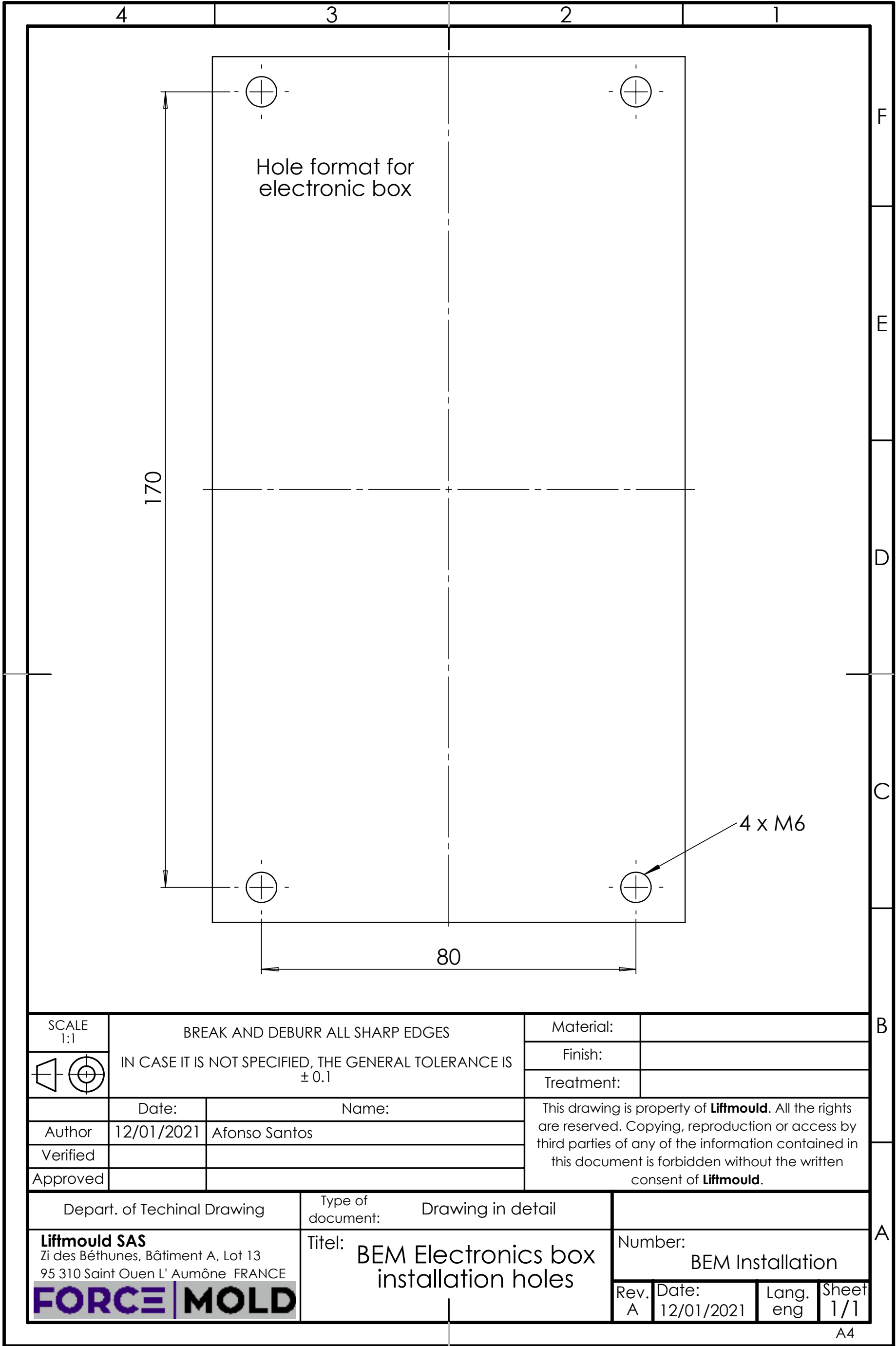
PLAN D'IMPLANTATION

Installation plan of the « BéM » electric mold blocking system for each side of the mold.



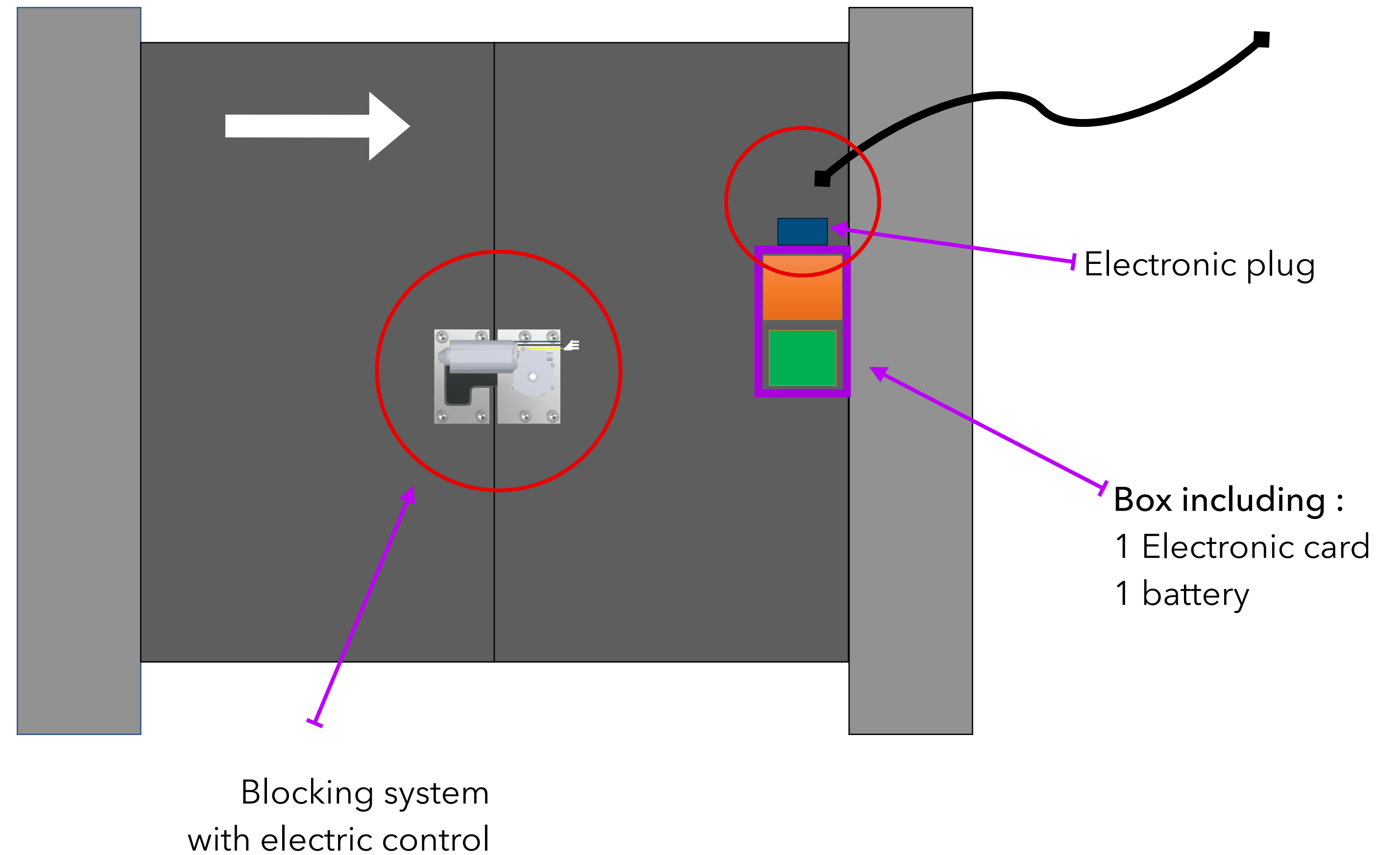
PLAN D'IMPLANTATION

BéM electrical box layout plan.



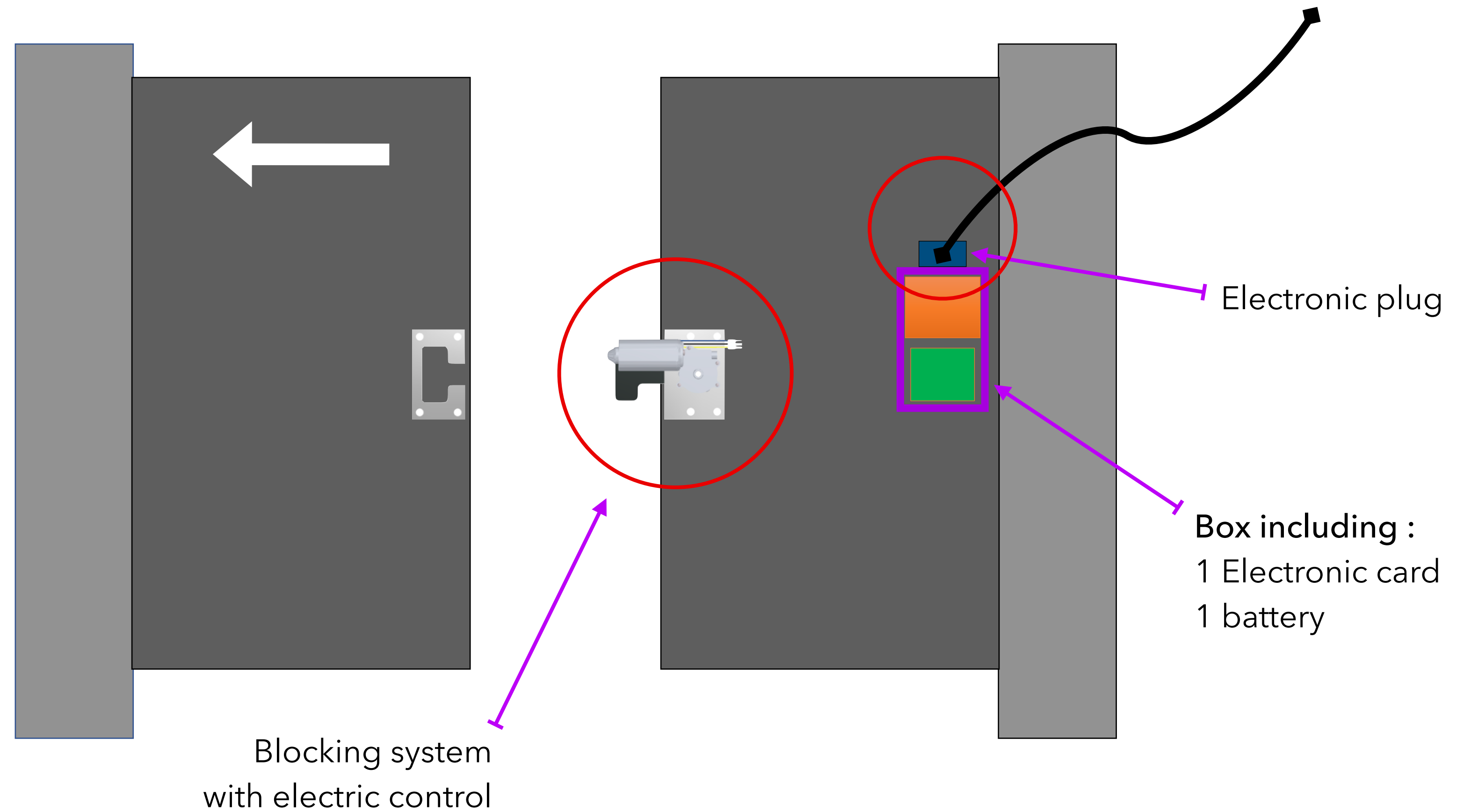
STEP 1 (mold locked)

- Electronic plug disconnected
- Blocking system activated
- Mold locked (cannot open)



STEP 2 (mold unlocked)

- Electronic plug connected
- Blocking system deactivated
- Unlocked mold (can open)



CARACTERISTIQUES

- ◆ Electronic plug disconnected = blocking system activated - mold locked (cannot be opened)
- ◆ Electronic plug connected = blocking system deactivated - mold unlocked (mold in working mode)
- ◆ Battery recharge during production cycles with electronic plug
- ◆ Warning: the BEM system cannot be used when turning the mold

CONTACT

Romain OTTAVY

Phone : +33 (0)1 30 27 21 89

Mobile : +33 (0)6 75 18 06 12

Mail : romain@liftmould.com

Liftmould Sas

ZI des béthunes, 14 rue du compas
BP 20433, Saint Ouen l' Aumône
95005 CERGY PONTOISE Cedex France