

Liftmould studs technical document

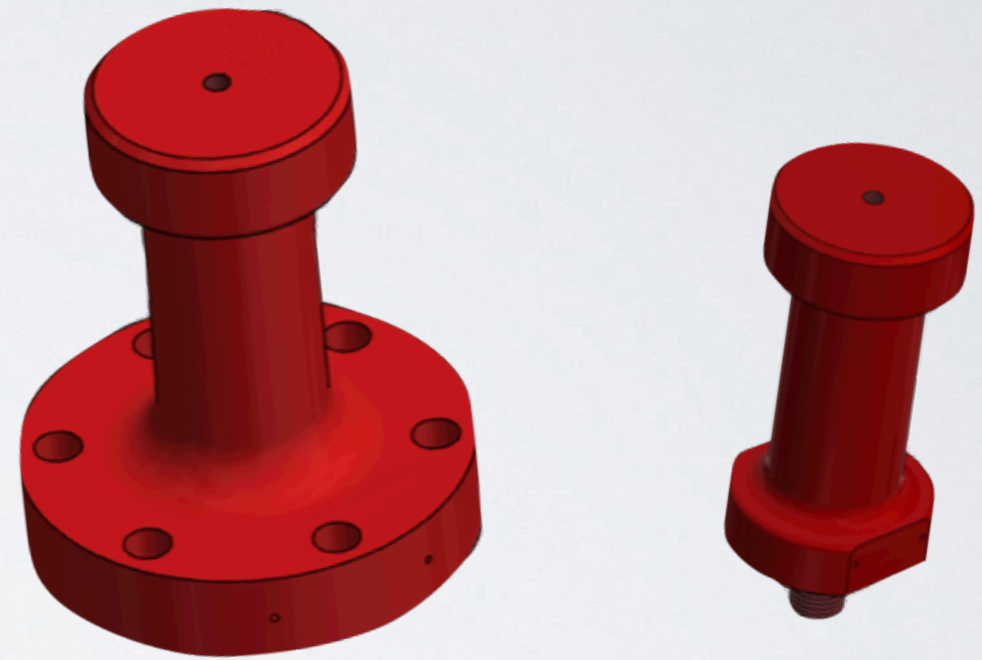


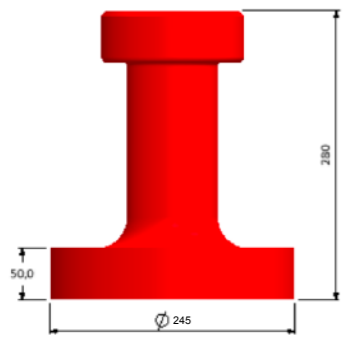
TABLE OF FORCES

The Liftmould company experimentally tested and certified its products with the supervision of Bureau Veritas.

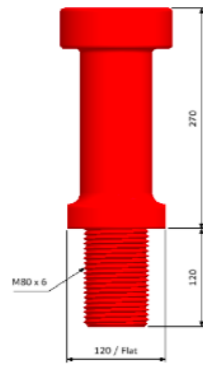
All the components were dimensioned with a minimum factor of safety to ensure user safety.

PRODUCTS CODE	PRODUCTS	CMU	TYPE OF FIXATION	SAFETY COEFICIENT
ELS 60T	ELS 60T	60 T	-	5
PL60T	PIN 60T	60 T	6 screws M24 (class 12/9)	5
PL40T80	PIN 40T (M80)	40 T	Thread M80	5
PL30T64	PIN 30T (M64)	30 T	Thread M64	5
PL25T56	PIN 25T (M56)	25 T	Thread M56	5
PL20T48	PIN 20T (M48)	20 T	Thread M48	5
PL15T42	PIN 15T (M42)	15 T	Thread M42	5
PL10T36	PIN 10T (M36)	10 T	Thread M36	5

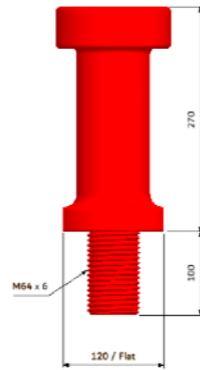
LIFTMOULD STUDS



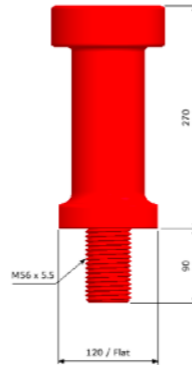
**Pin 60T
(6 screws)**



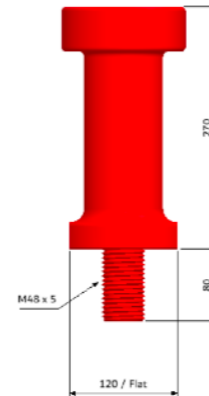
**Pin 40T
(M80)**



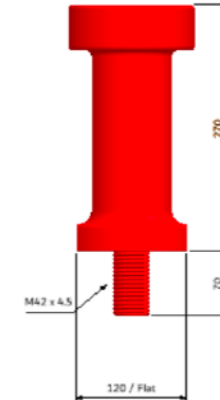
**Pin 30T
(M64)**



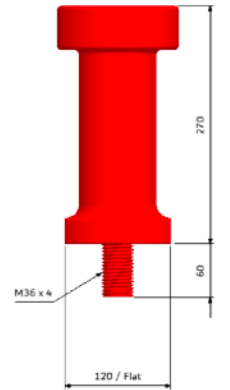
**Pin 25T
(M56)**



**Pin 20T
(M48)**



**Pin 15T
(M42)**



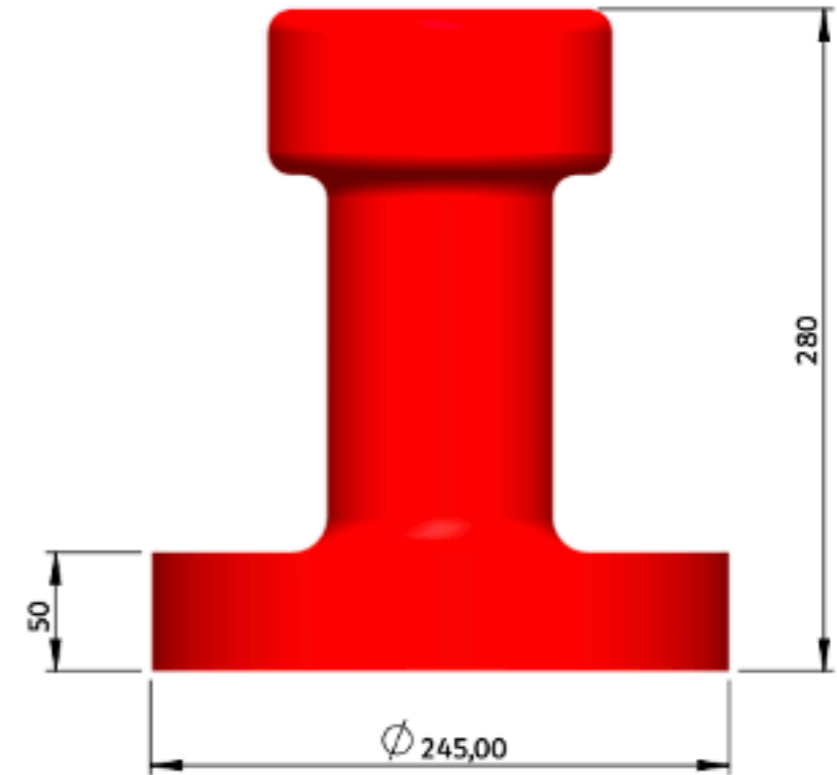
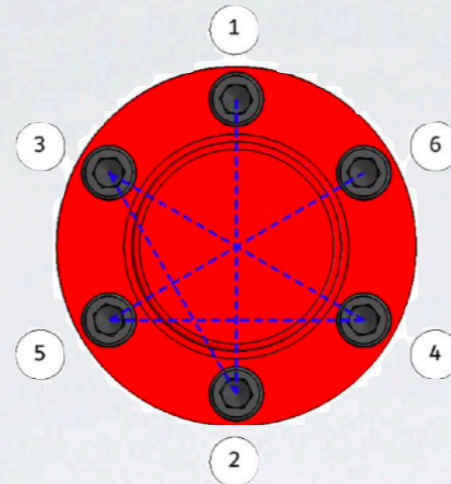
**Pin 10T
(M36)**

60T STUD

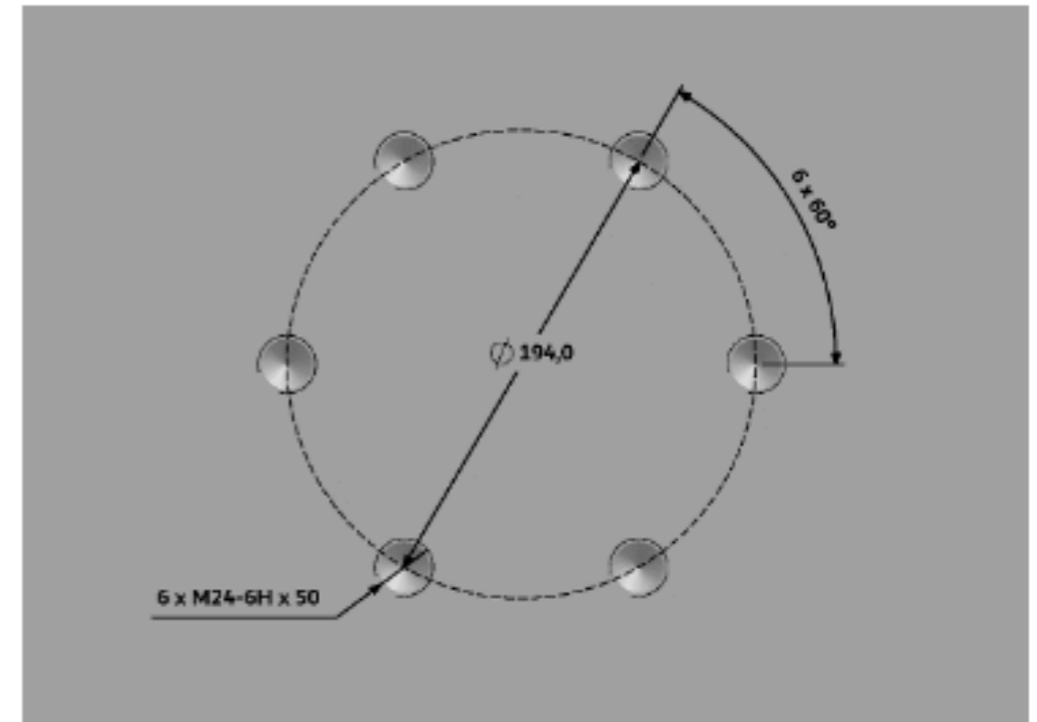
6 screws

WLL : 60T

Tightening torque :
Screws M24 : 380 N.m



- The 60T pin must be fixed to the mold using 6 x DIN 912 M24 L= 90 mm class 12.9 (certified). Liftmould can provide these bolts
- The 60T pin must be placed at the center of gravity of the mould.



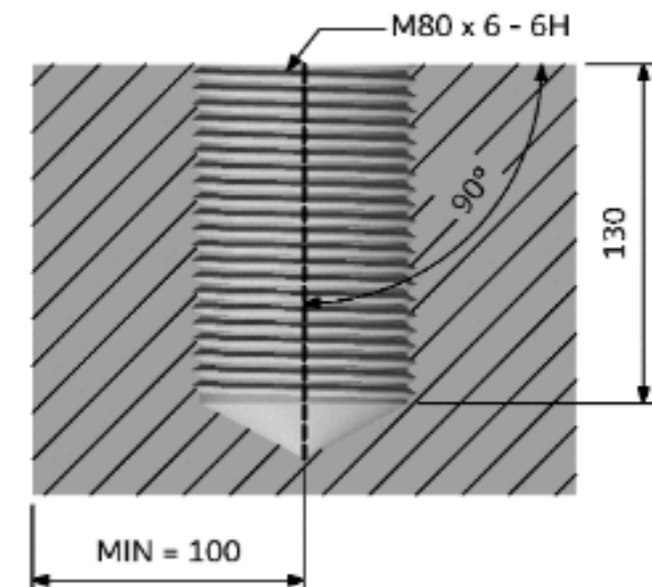
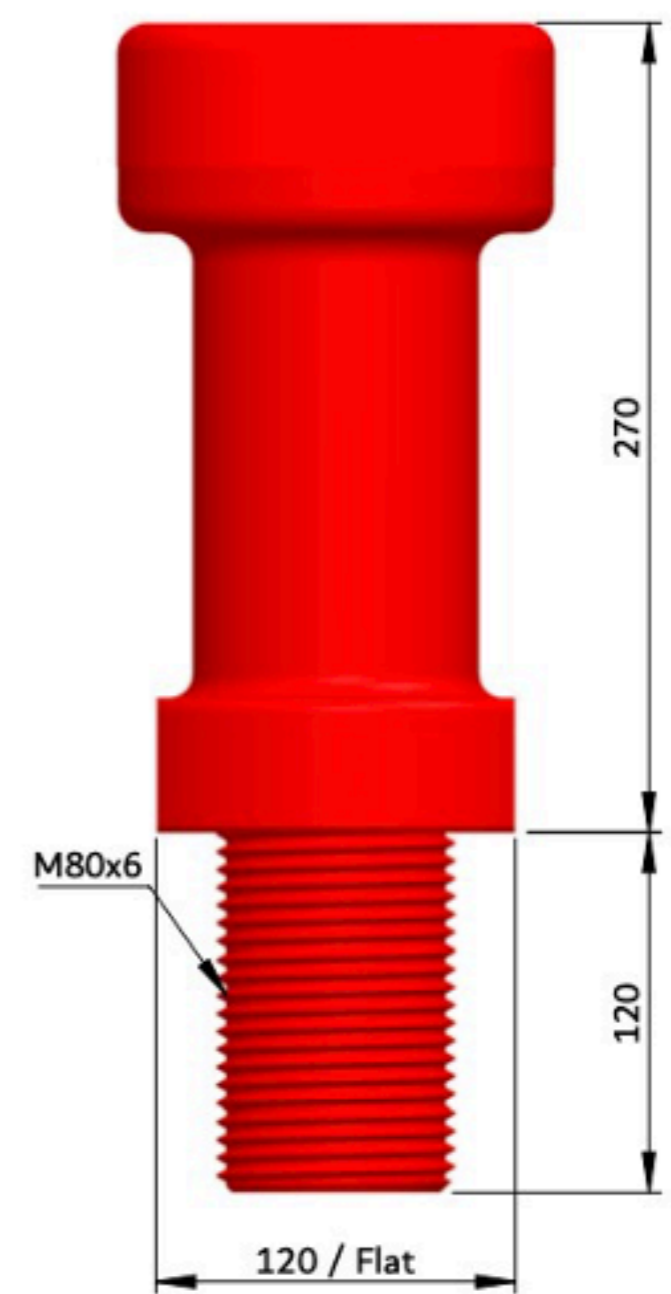
40T STUD

M80 thread

WLL : 40T

tightening torque :
600 N.m

- The 40TM80 stud must be placed at the center of gravity of the mold.



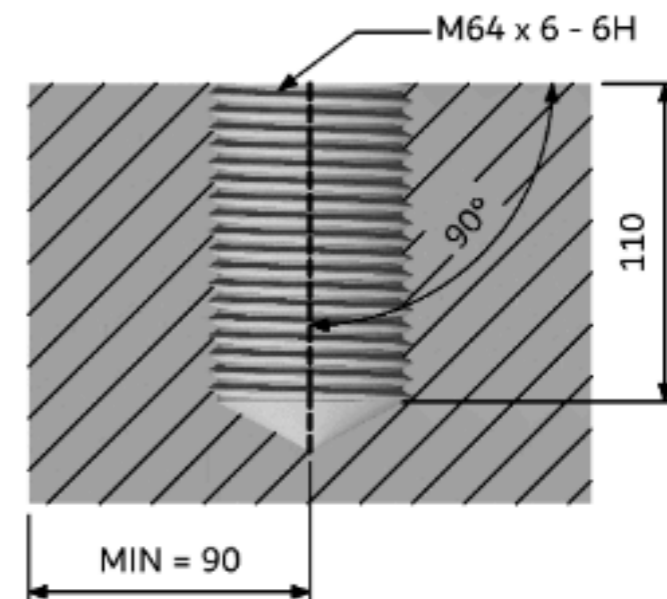
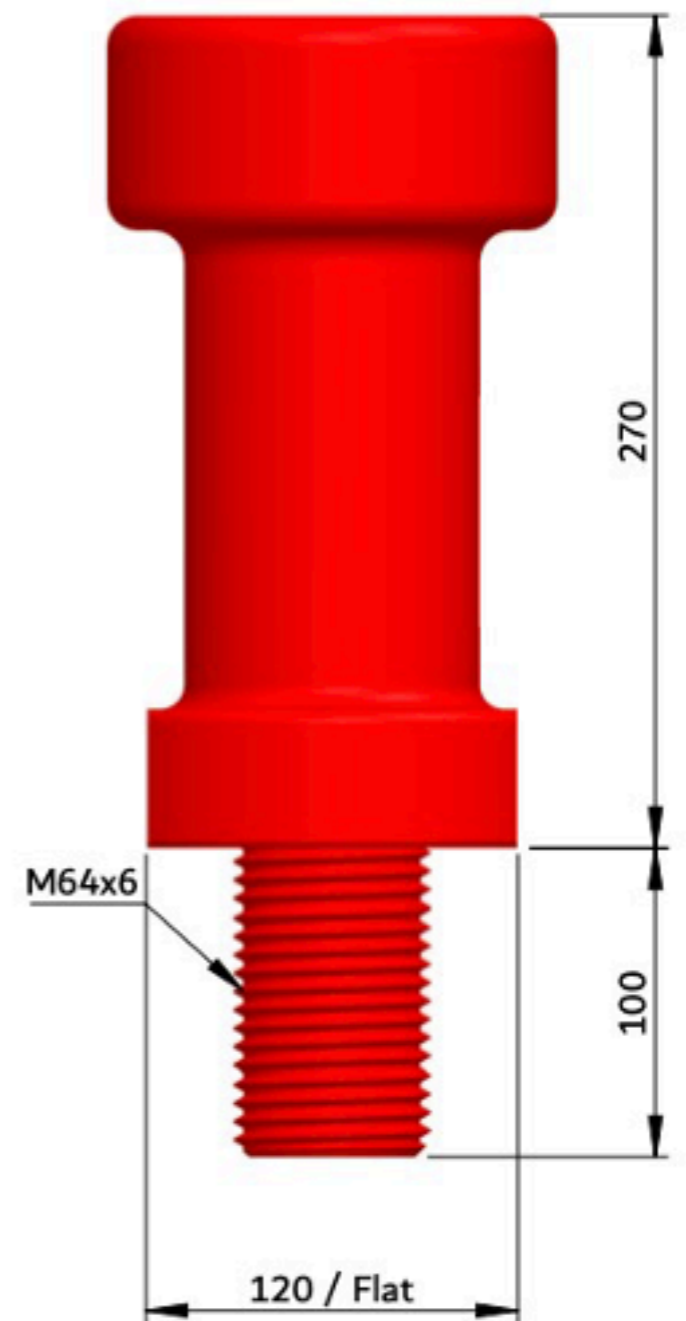
30T STUD

M64 thread

WLL : 30T

tightening torque :
600 N.m

- The 30TM64 stud must be placed at the center of gravity of the mold.



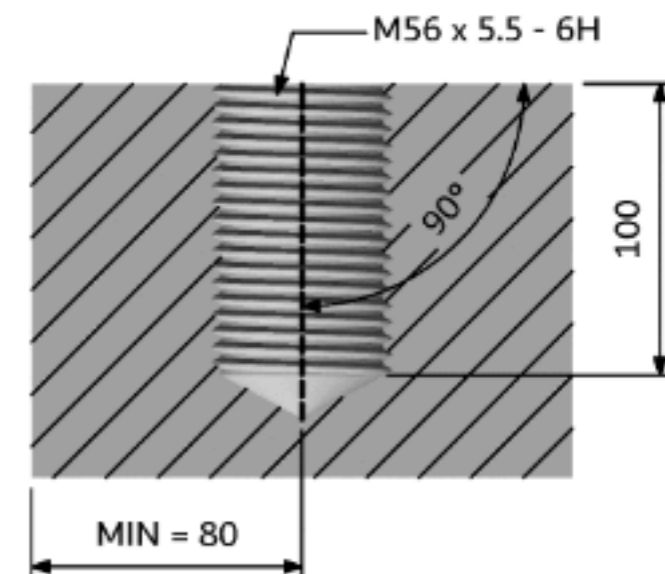
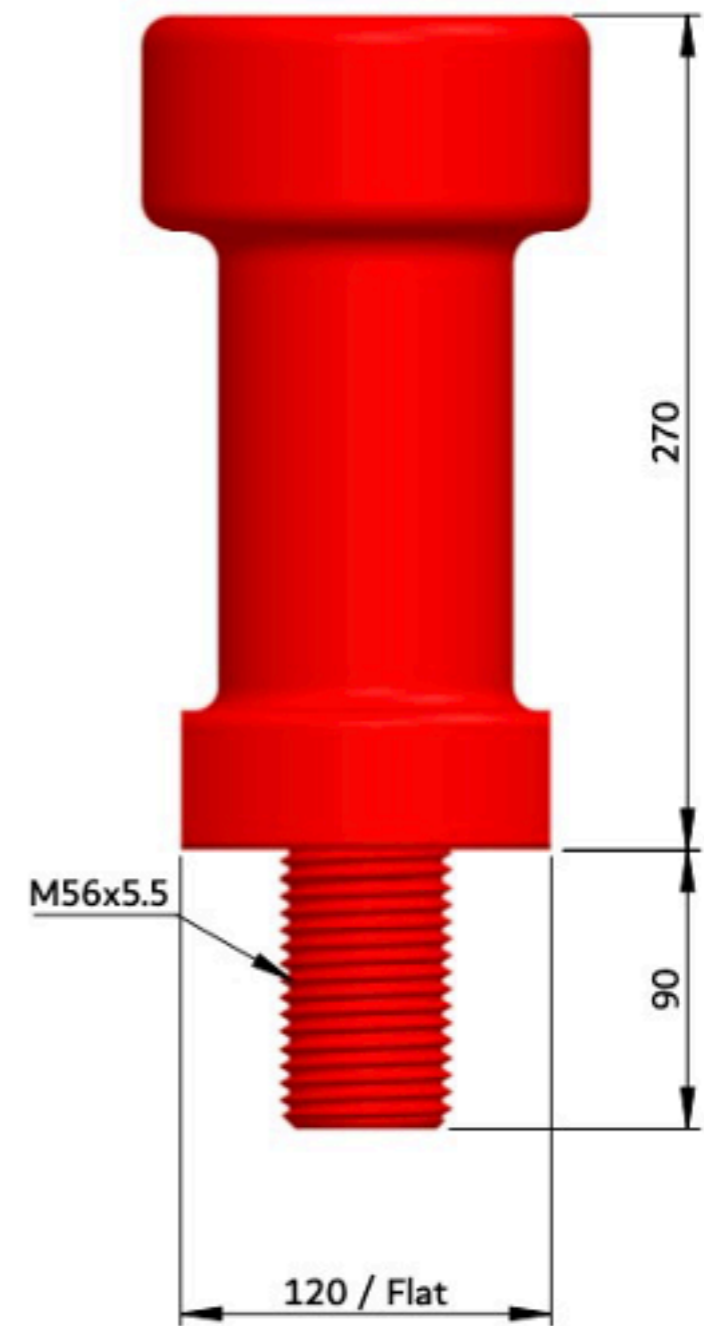
25T STUD

M56 thread

WLL : 25T

tightening torque :
600 N.m

- The 25TM56 stud must be placed at the center of gravity of the mold.



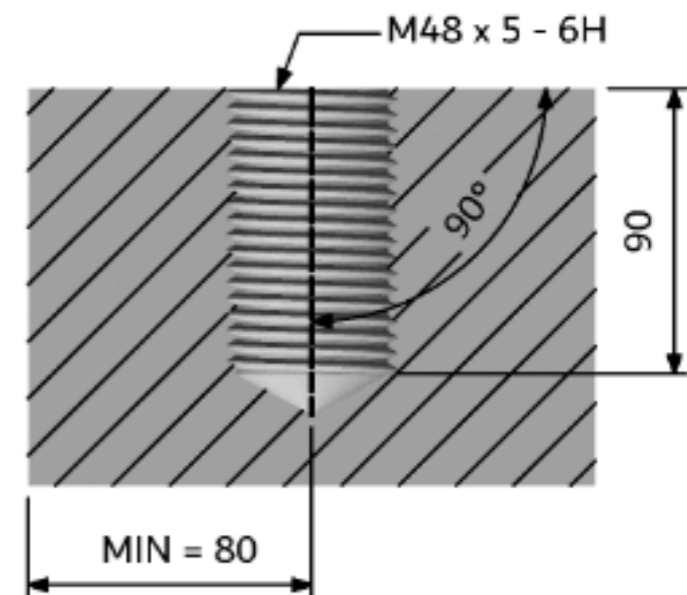
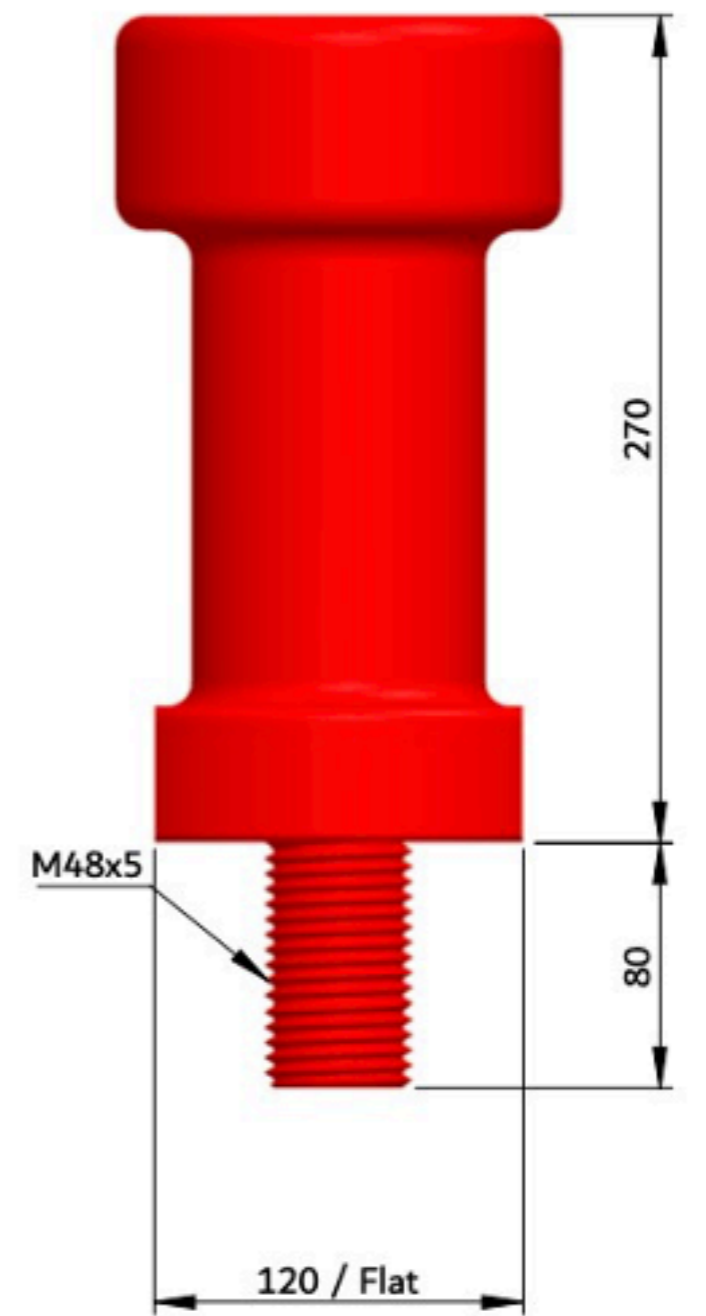
20T STUD

M48 thread

WLL : 20T

tightening torque :
600 N.m

- The 20TM48 stud must be placed at the center of gravity of the mold.



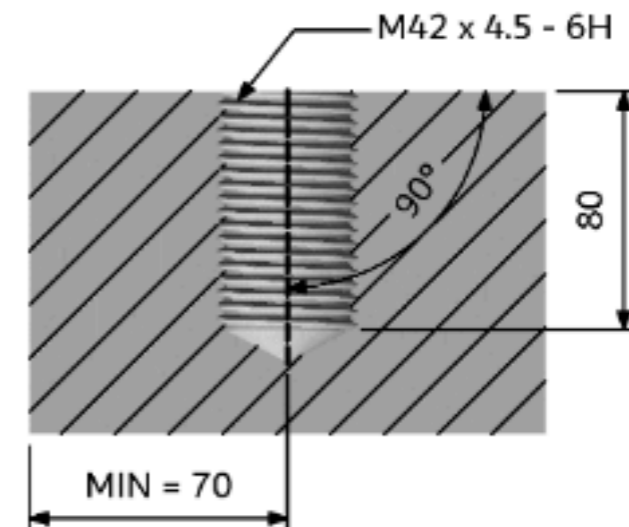
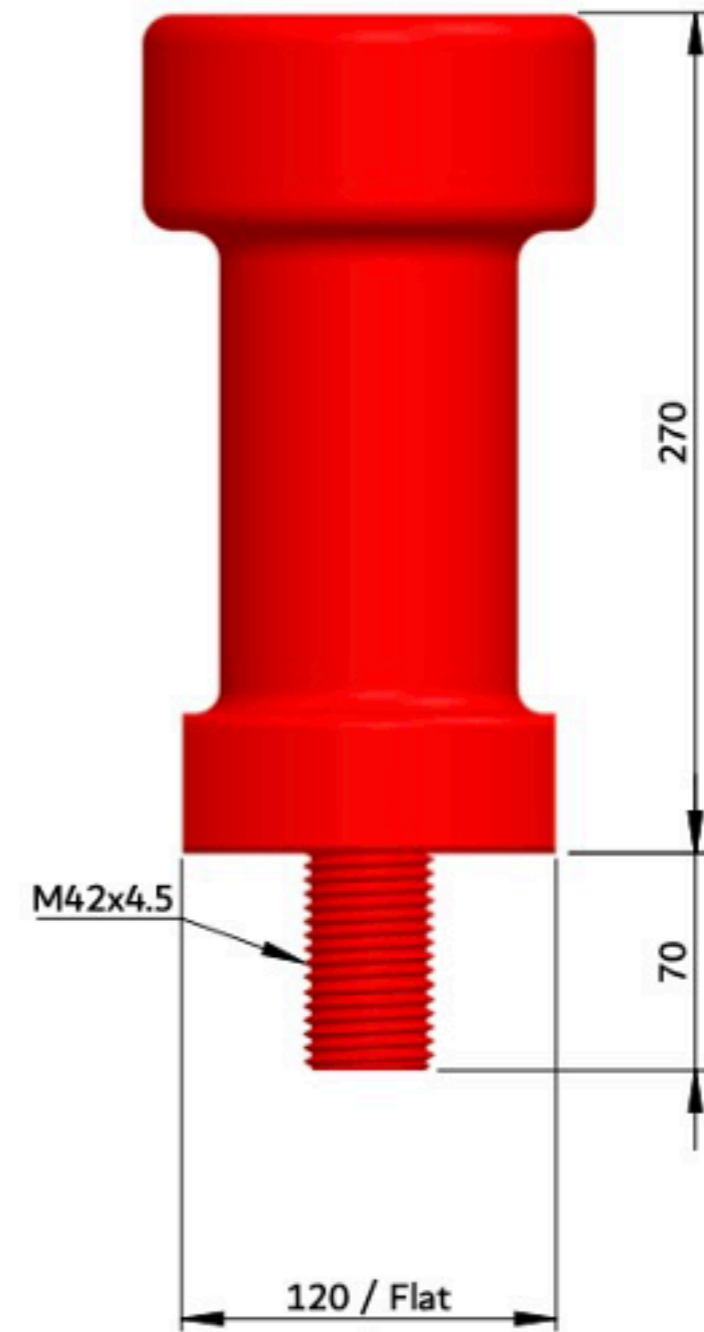
15T STUD

M42 thread

WLL : 15T

tightening torque :
400 N.m

- The 15TM42 stud must be placed at the center of gravity of the mold.



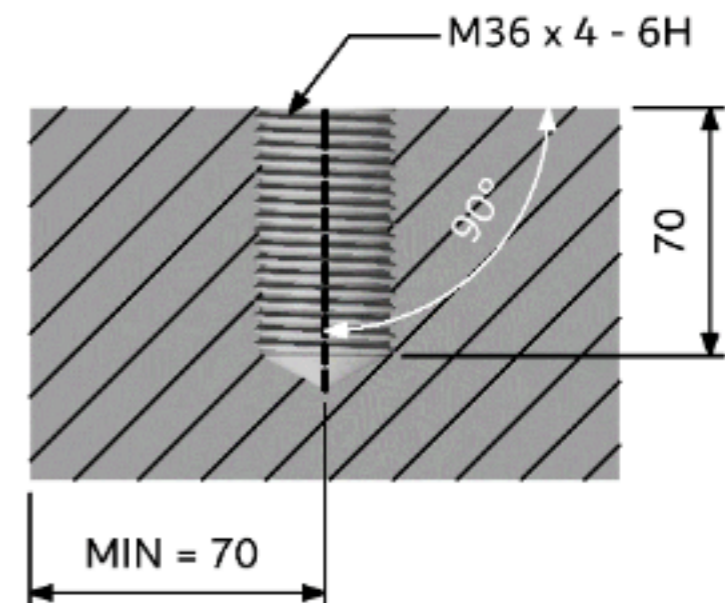
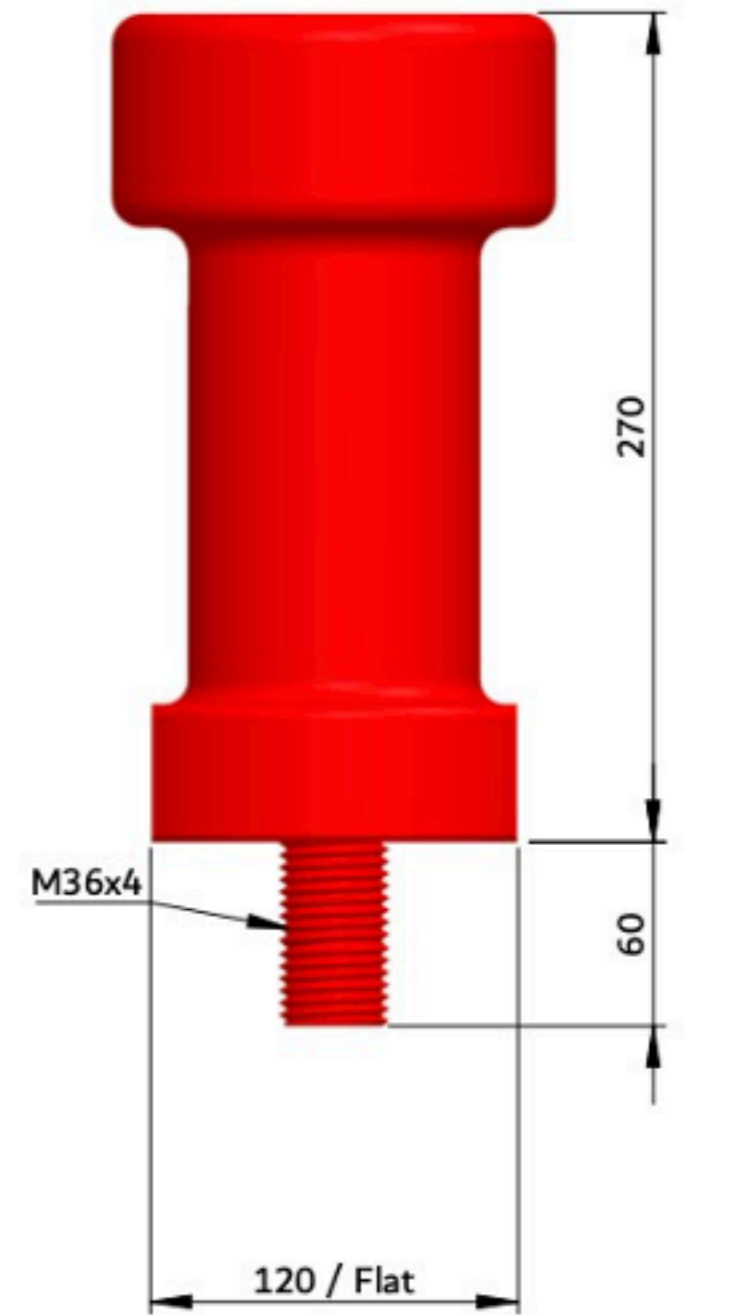
10T STUD

M36 thread

WLL : 10T

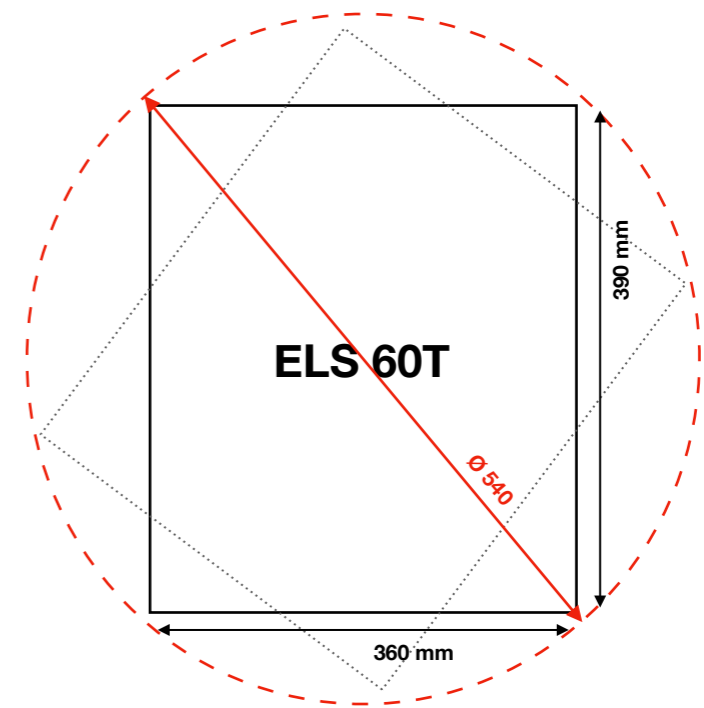
tightening torque :
320 N.m

- The 10TM36 stud must be placed at the center of gravity of the mold.



DIAMETER AROUND THE CENTER POINT

To avoid any interference with the ELS 60T system, it is advisable to provide a gap of $\varnothing 540$ around the center point of the stud.



CONTACT /

PHONE : +33 (0)1 30 27 21 89

MOBILE : +33 (0)6 75 18 06 12

MAIL : romain@liftmould.com

commercial@liftmould.com

LIFTMOULD.COM



COMMERCIAL

OFFICE :

LIFTMOULD SAS
ZI DES BÉTHUNES
14 RUE DU COMPAS
BP 20433

SAINT OUEN L' AUMÔNE
95005 CERGY PONTOISE
CEDEX FRANCE

PLANT :

ZONA INDUSTRIAL DE
VIADORES
LOTE 34, PAMPILHOSA
3050-480 PAMPILHOSA
PORTUGAL

In 2019,
the Liftmould Group has
just acquired a new plant
to double its production
area



LIFTMOULD

Your security is our priority